

WILTSHIRE POLICE

CPT Area Briefing

Wiltshire East Community Policing Team

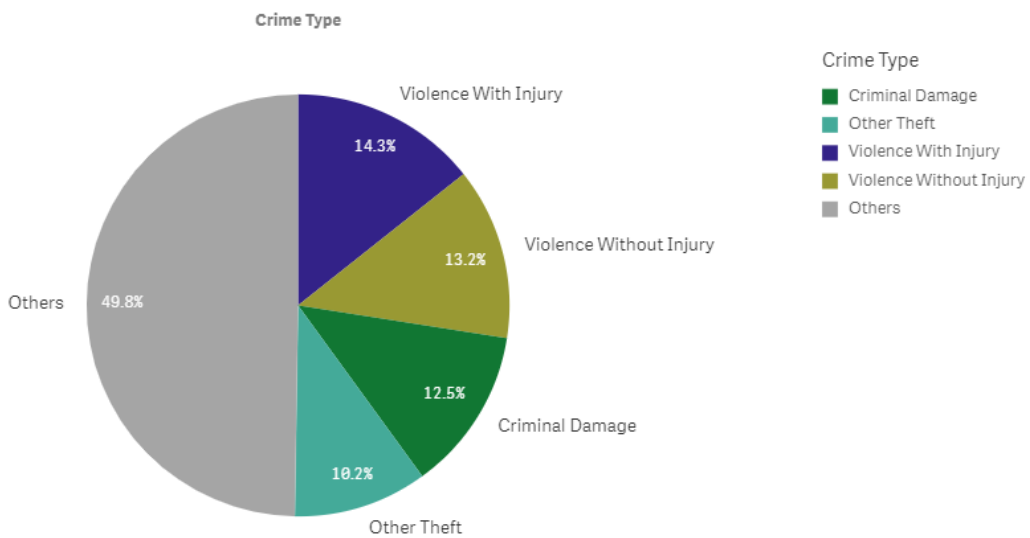


Proud to serve and protect our communities

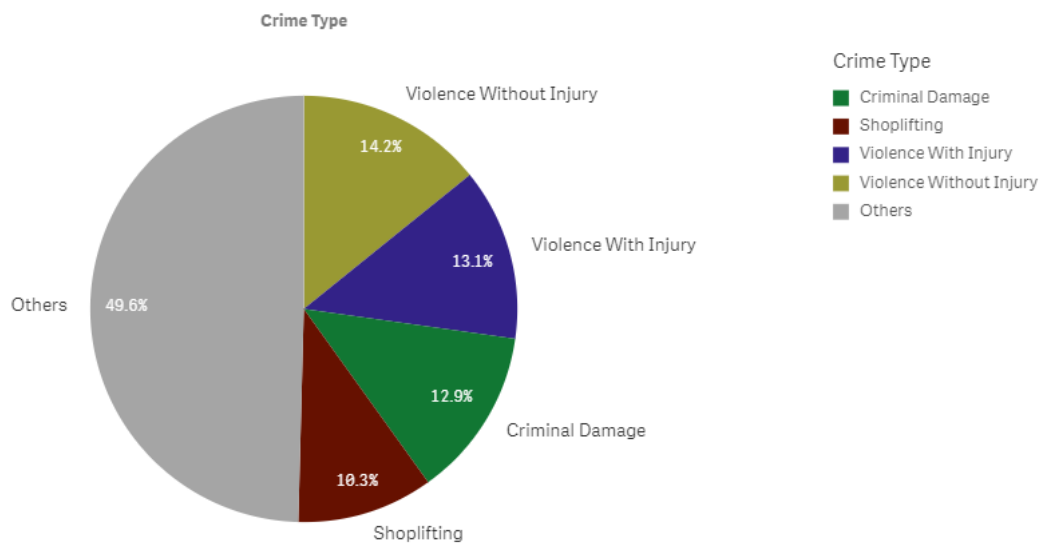
August 2019

PERFORMANCE

Your Area - Five Highest Crime Groups (Previous 12 months)



Force Area - Five Highest Crime Groups (Previous 12 months)



Wiltshire East CPT - crime and incident demand for the 12 months to July 2019

WILTSHIRE POLICE

CPT Area Briefing

Wiltshire East Community Policing Team



Proud to serve and protect our communities

August 2019

Force-wide

- Wiltshire Police has reduced the volume of recorded crime by 1% in the 12 months to July 19 and continues to have one of the lowest crime rates in the country.
- Our service delivery remains consistently good.
- In July, we received 9,653 999 calls which we answered within 4 seconds on average and 14,474 101 calls which we answered within 1 minutes 44 seconds on average.
- In July, we also attended 1,862 emergency incidents within 10 minutes and 49 seconds on average.
- Wiltshire Police has seen a 26% reduction in vehicle crime and 20 per cent in burglary in the 12 months to June 2019. These are the most improved trends in the country.
- The Crime Survey of England & Wales recently ranked Wiltshire as one of the top forces nationally for public confidence. It covers the 12 months to December 2018 The publication can be found here: WWW.CRIMESURVEY.CO.UK

For more information on Wiltshire Police's performance please visit:

PCC's Website - <https://www.wiltshire-pcc.gov.uk/article/1847/Performance>

HMICFRS Website - <https://www.justiceinspectrates.gov.uk/hmicfrs/police-forces/wiltshire/>

Police.uk - <https://www.police.uk/wiltshire>

WILTSHIRE POLICE

CPT Area Briefing

Wiltshire East Community Policing Team

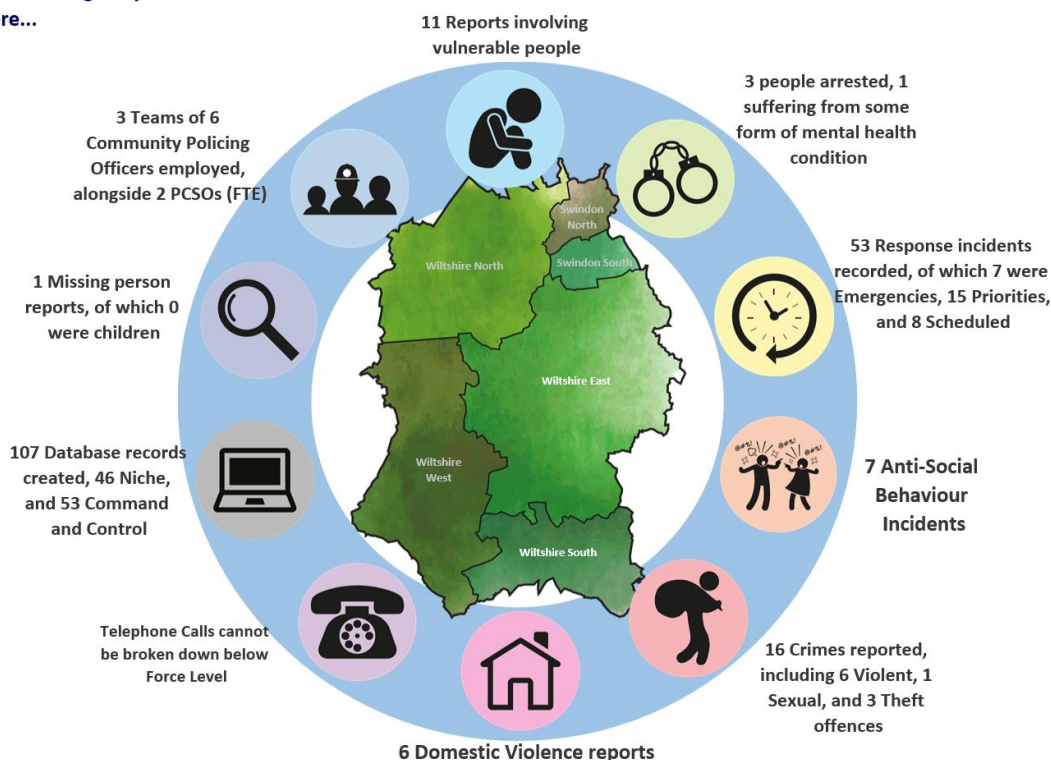


Proud to serve and protect our communities

August 2019

Area specific

On an average day in Wiltshire East there were...



Wiltshire East CPT Demand Overview – 12 months to July 2019

MARLBOROUGH CRIME STATISTICS FROM 01/07/2019 – 31/07/2019:

- 8 REPORTS ASB
- 5 REPORTS OF BURGLARY
- 4 REPORTS OF DRUG OFFENCES
- 19 REPORTS OF THEFT
- 19 REPORTS OF VIOLENT CRIME
- 12 REPORTS OF CRIMINAL DAMAGE
- 5 REPORTS OF PUBLIC ORDER
- 10 REPORTS OF VEHICLE OFFENCES (4x Beauty Spot theft from motor vehicles)

WILTSHIRE POLICE

CPT Area Briefing

Wiltshire East Community Policing Team



Proud to serve and protect our communities

August 2019

HIGH LEVEL CPT UPDATES:

Three men convicted of Burbage petrol station burglary - PS Tracey Holloway, East Wiltshire CPT deputy praised the combined efforts of staff and the community: "We would like to thank the member of the public who quickly rang us with information about the burglary in the early hours of the morning, this sense of community spirit was key to help our officers to locate, detain and prosecute these men. We would encourage the public to take action if they should witness a crime in progress by calling us on 999 straight away and provide as much detail as possible."



WILTSHIRE.POLICE.UK

Excellent team work leads to three men from London convicted of Burbage Petrol Station burglary - Wiltshire Police

On 31 July at Salisbury Crown Court three men pleaded guilty to a burglary at a petrol station in...

Marlborough Police
 Published by Emily Sykes [?] · 5 August at 07:34 · 🌐

Team 3 continuing patrols of your local beauty spots to deter thefts from parked cars this Sunday afternoon. 🍀 🇮🇪 🇺🇦



WILTSHIRE POLICE

CPT Area Briefing

Wiltshire East Community Policing Team



Proud to serve and protect our communities

August 2019



Marlborough Police

Published by CrowdControlHQ [?] · 2 August at 16:07 ·

A man was arrested in Marlborough on suspicion of drug offences last night (August 2).

Officers stopped a Vauxhall Astra being driven in Poulton Hill at approximately 7pm.

Drugs paraphernalia was sighted in the footwell of the vehicle and a search was carried out under the Misuse of Drugs Act.

A 20-year-old man from the Marlborough area was arrested on suspicion of possession with intent to supply class A drugs.

He has since been released under investigation while enquiries are ongoing.

PC Emily Grigor said: "This was an excellent stop by officers who had concerns about the manner in which the vehicle was being driven.

"When the vehicle was stopped and a search carried out, approximately 15 wraps of suspected class A drugs were located along with drugs paraphernalia. The driver was arrested and our investigation is ongoing.

"We'd urge any members of the public who have concerns that drug activity is taking place in their neighbourhood to call us on 101 and we will take appropriate action."



Marlborough Police

Published by James Robbins [?] · 21 July at 15:15 ·

PCSO BRAITHWAITE and PC 'Stainless' STEELE have been patrolling Priors Gardens today. Two youths were located last week smoking cannabis and are being dealt with by community resolution to educate them in the perils of smoking Cannabis which is still a class B drug.



Wiltshire East CPT has a new Community Policing Sergeant.

Tracey HOLLOWAY has worked for Wiltshire Police for 13 years starting her career as a PCSO. She has worked in community policing throughout her career with roles such as Beat manger, Community Coordinator and Team Sgt.

"My role as the deputy Sgt is to ensure we engage with our communities and promote our visibility; Ensuring the CPT respond effectively to longer-term community issues and the coordination of multi-agency approaches to problem solving.

I have worked the majority of my career in Salisbury dealing with many community issues. I am passionate about community policing and enjoy the challenge of problem solving from different areas. I look forward to working in the local community of Devizes"

WILTSHIRE POLICE

CPT Area Briefing

Wiltshire East Community Policing Team



Proud to serve and protect our communities

August 2019

YOUR CPT – Wiltshire East



A/Inspector Pete Foster

Peter.Foster@wiltshire.pnn.police.uk



Sgt Tracey Holloway – Sector Deputy

Tracey.Holloway@Wiltshire.pnn.police.uk



PC Emily Grigor – Community Coordinator

Emily.Grigor@Wiltshire.pnn.police.uk

WILTSHIRE POLICE

CPT Area Briefing

Wiltshire East Community Policing Team



Proud to serve and **protect** our communities

August 2019



PCSO Mark Braithwaite – Marlborough Town

Mark.Braithwaite@Wiltshire.pnn.police.uk



PCSO Melissa Camilleri – Marlborough Rural

Melissa.Camilleri@Wiltshire.pnn.police.uk



PCSO Emily Sykes – Marlborough Town

Emily.Sykes@Wiltshire.pnn.police.uk

You can find out more about Wiltshire East CPT, including news stories and contacts for local officers, on our website: www.wiltshire.police.uk/WiltshireEast

WILTSHIRE POLICE

CPT Area Briefing

Wiltshire East Community Policing Team



Proud to serve and protect our communities

August 2019

LOCAL PRIORITIES

CPT Inspector to update progress on each

PRIORITIES FOR WILTSHIRE EAST CPT	UPDATE
Priority 1: <u>ANTISOCIAL BEHAVIOUR</u>	
<p>Priory Gardens – Drug use & anti-social behaviour Skate Park & Car Park – Drug use & vehicle anti-social behaviour</p>	<p>Continued high visibility patrols of the area. This is not only by our East Sector PC's and PCSO's but also our Special Ops colleagues, such as Firearms and dogs.</p>
Priority 2: RURAL CRIME: HARECOURSING AND BEAUTY SPOT THEFTS	
<p>It is imperative that we maintain a high visible presence within our rural county. As summertime is fast approaching, we anticipate an increase in visitors to both our Beauty Spot areas and countryside.</p> <p>We will be aiming to regularly patrol our Beauty Spots and our rural sites that unfortunately do become a target of vehicle and rural crime.</p> <p><u>ADVICE:</u></p> <p>It is important for members of the public not to leave any valuables within their vehicles. It is also important for members of the Public to report any suspicious activity to us via 101 or 999 if it is a crime in progress.</p>	<p>Continued high visibility patrols in the most vulnerable areas.</p> <p>We are still receiving reports of vehicles having been broken in to- please ensure you do not leave any valuables in your cars.</p>
Priority 3: VEHICLE CRIME AND COMMUNITY SPEED WATCH	
<p>Keeping our roads safe is extremely important within our area as we have several A Roads that pass through our County.</p> <p>We will be receiving fortnightly updates from our Community Speed Watch Teams with specific areas to target. It is important that we work with the general public to identify unsafe road users within our county. We hope to show how hard we will be working to target the roads through our Social Media updates and cooperation with Community Speed Watch Schemes</p>	<p>Continued high visibility mobile patrols at significant times of day.</p>

WILTSHIRE POLICE

CPT Area Briefing

Wiltshire East Community Policing Team



Proud to serve and protect our communities

August 2019

Priority 4: BURGLARIES

We have seen an increase in reports of both domestic and commercial burglaries within the Marlborough area.

ADVICE FOR COMMERCIAL PREMISES:

- Removing high value goods from window displays and leave the till open - by leaving the till visible, open and clearly empty, any burglars seeking cash are likely to lose interest.
- Install dusk-to-dawn lighting at any entrance to the property that is overlooked and by securing high risk display cabinets, such as for tobacco displays, with protective grilles and shutters.
- Bank your cash - If you do not leave cash in the store overnight it cannot be stolen in a burglary. Night safe facilities are available after opening hours. If you do not use a specialist cash collection agency be sure you vary the route you take to the bank and the times you leave the shop.
- Doors and windows are particularly vulnerable - use security-rated products to make them more burglar-resistant. For more details visit Secure by Design.

ADVICE FOR DOMESTIC PREMISES:

- Lock your doors and windows every time you leave the house, even when just in the garden and never leave a spare key in a hiding place like in a plant pot or letter box - a thief knows all the hiding places
- Register all serial numbers from electrical items, tools and garden equipment with Immobilise.com the free national property register. Mark items without serial numbers with an artificial DNA property marker such as Smartwater or SelectaDNA.
- Use a timer to set lights to mimic your usual activity when you are not at home.
- Do not open the door to anyone you don't know or are not expecting. Always check by using a spy-hole or look through a window. Don't trust an ID card.
- Always report any suspicious activity, note any vehicle registrations, descriptions of persons involved and direction of travel.
- Consider installing a monitored burglar alarm, and only use a company that is registered or certified with the NSI or the SSIAB.
- Take photographs of all jewellery including hallmarks and keep them safe. Make sure that you have up to date contents insurance.
- Keep all keys, purses and wallets out of sight and away from the letterbox.

WILTSHIRE POLICE

CPT Area Briefing

Wiltshire East Community Policing Team



Proud to serve and protect our communities

August 2019

HIGH LEVEL PCC UPDATES

- **Pay increase** - Police Officers are to receive a 2.5% pay increase as agreed by the Government. This is welcome news and well deserved, I only hope that the same increase is also afforded to police staff as well. However, it is expected that we will have to meet this increase from existing Wiltshire Police budgets and that no further funding will come from the Government to fund this rise, which is disappointing and I continue to lobby the Government for fairer funding in Wiltshire.
- **PCSOs** - Last month Wiltshire Police Federation, which represents police officers within the Force, wrote an open letter suggesting that the Force should 'axe PCSOs' and recruit police constables instead. Both the Chief and I strongly refuted this suggestion. We both recognise the key role that PCSOs play in community engagement, intelligence gathering and supporting the most vulnerable. The role of a PCSO is a completely different one to that of a police constable and they play a key role in our community policing teams.
- **Additional police officers** - I was pleased to hear the new Prime Minister's commitment to policing and his promise of 20,000 additional police officers in the next three years. We don't know what this will look like in terms of how many more we will get in Wiltshire but I trust that more detail will soon be forthcoming. I do have some concerns around the practicalities of recruiting so many officers in such a short period of time and it certainly won't happen overnight, with it taking around a year to recruit and train an officer before they're able to go on the beat, but his commitment to strengthening our police forces is welcome nonetheless.

HIGH LEVEL FORCE UPDATES

- **Youth crime** – A Government report into the increase in youth violence has been welcomed by the Force. Chief Constable Kier Pritchard has said that although there hasn't been a significant increase in Wiltshire, it is still a concerning issue for local people. He is calling for a multi-agency approach and focused on the need to engage with young people to help prevent them from falling into a life of crime.
- **Rural crime** – Wiltshire has bucked the national trend when it comes to rural crime, recording a 36% year-on-year drop when it comes to the amount of money this type of crime is costing people in the county. This is believed to be due to the focus our Rural Crime Team has placed on crime prevention advice, including the encouragement of CCTV, anti-poaching ditches and the installation of GPS trackers on equipment.

WILTSHIRE POLICE

CPT Area Briefing

Wiltshire East Community Policing Team



Proud to serve and protect our communities

August 2019

- **Domestic abuse** – As part of our Summer Demand campaign, we have been focusing on highlighting the important topic of domestic abuse and making sure victims know how to access the support available. There is also a focus on encouraging friends and neighbours to report concerns to the police. You can read more online: <https://www.wiltshire.police.uk/article/4820/VIDEO-What-to-do-if-you-have-concerns-your-neighbour-is-being-abused-by-a-partner>

GET INVOLVED

- You can keep up to date with the latest news in your area by signing up to our Community Messaging service – www.wiltsmessaging.co.uk
- You can follow your CPT on social media <https://www.wiltshire.police.uk/Followus>
- More information on your CPT area can be found here: www.wiltshire.police.uk and here www.wiltshire-pcc.gov.uk

FEEDBACK/ACTIONS TAKEN